

# Colour Protection

Deep-conditioning care and colour protection  
for coloured and chemically treated hair



## COLOUR PROTECTION

Two customised effect concepts regenerate and strengthen the structure of coloured and chemically treated hair, provide caring protection against negative environmental influences and maintain the vibrance and shine of the hair colour.

If you love something, it deserves plenty of special attention. This also applies to a beautiful hair colour, which should stay as vibrant and full of reflexes as on the very first day for as long as possible. With two extremely gentle and effective product concepts, *Colour Protection* provides perfectly tailored care and comprehensive protection for colour-treated hair — for long-lasting brilliant results. In the *Shine Restoring* care products, a colour protection complex based on plant active ingredients such as sea kale extract and camellia oil provides significantly higher colour stability and long-lasting shine, while the effective molecular protection complex in the *Structure Restoring* formulations repairs and regenerates chemically treated hair on the inside and seals it on the outside, thus protecting it against hair breakage and loss of shine.



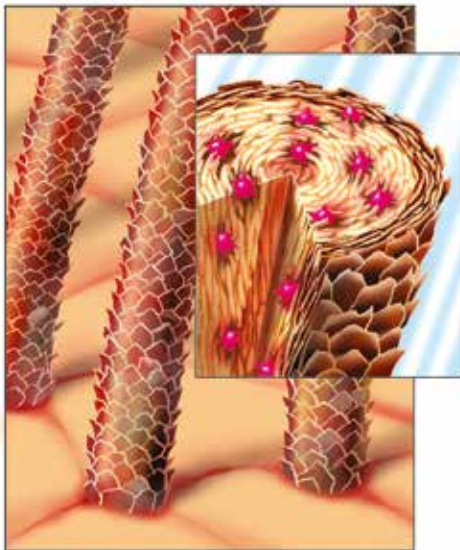
The strong concept for fascinating  
colour brilliance.



## COLOUR PROTECTION

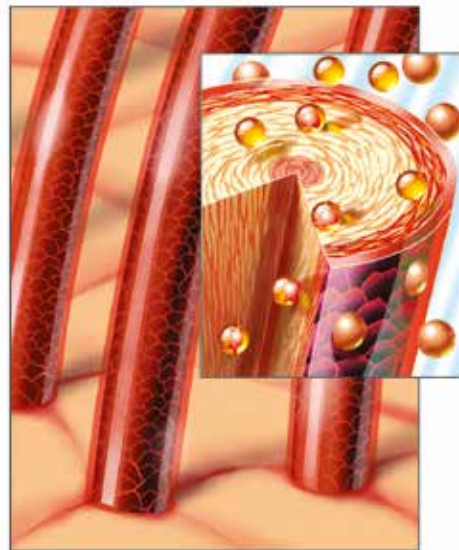
### Shine Restoring — regenerative care and protection for colour-treated hair

During a colouring process, the cuticle must open so that the colour pigments can permanently deposit themselves in the hair and the new desired colour is maintained for a long time. This is why targeted care is essential after colouring in order to ensure that the cuticle can close again and regenerate. If coloured hair is incorrectly conditioned or not conditioned at all, the cuticle remains rough and is therefore receptive and prone to all negative influences to which the hair is exposed on a daily basis. The pigments are lost prematurely, and the hair dries out and becomes dry, brittle, lacklustre and dull.



WITHOUT COLOUR PROTECTION  
COMPLEX

Free radicals destroy the inner hair structures. The cuticle is opened, the hair becomes dry, brittle and dull, and the colour fades very fast.



WITH COLOUR PROTECTION  
COMPLEX

The destructive effect of the free radicals is neutralised, the outer cuticle remains protected and smoothed, the hair is soft, and the shine and vibrance of the coloured hair are maintained even after many washes.

## COLOUR PROTECTION

### Overview of Shine restoring products

SHINE RESTORING  
PRE-SHAMPOO



The deep-conditioning pre-treatment protects the hair against moisture and colour loss during washing — for wonderfully soft hair with healthy shine.

SHINE RESTORING  
SHAMPOO



The sulphate-free shampoo provides particularly gentle cleansing and protects the hair colour against fading and being washed out.

SHINE RESTORING  
CONDITIONER



The express hair care seals the hair's cuticle and therefore protects the hair colour against fading. It makes the hair soft without weighing it down.

SHINE RESTORING  
CONDITIONING FLUID

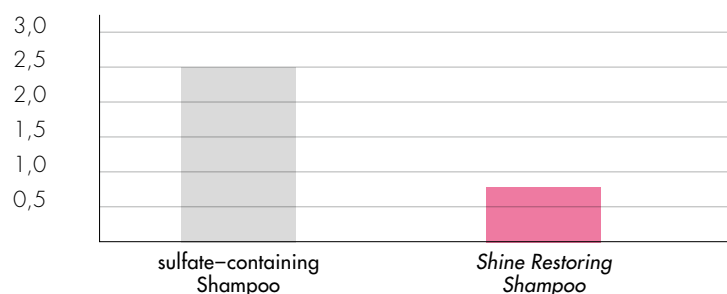


The leave-in fluid with integrated heat protection nourishes and conditions the hair down to the roots.

### Scientifically proven effect

Colour protection

Colour deviation  
 $dE^*_{ab}(D65)$



Left:  
Rinse water with a shampoo containing sulphates  
Right:  
Rinse water with Shine Restoring Shampoo

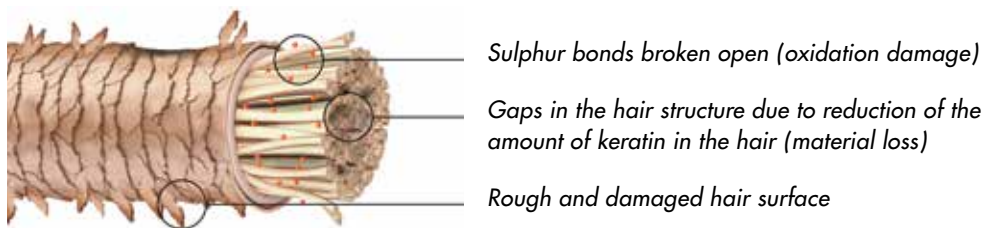
Up to 69% higher colour protection. Tested on coloured hair strands in shampoo solutions. This corresponds to a 12-week period of daily hair-washing

## COLOUR PROTECTION

# Structure Restoring — protection and regeneration of the hair during and after chemical treatments

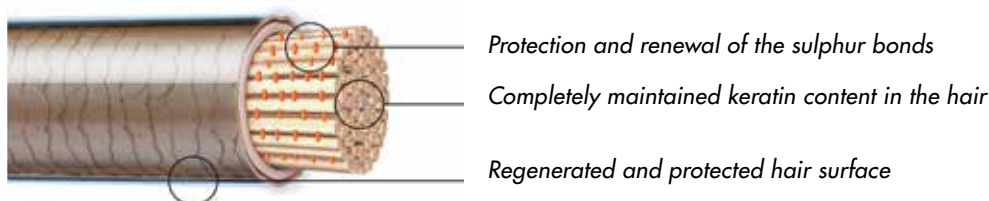
Bleaches and colourations all have one thing in common: to achieve lasting results, certain structures in the hair have to be broken up — with bleaching to decompose the hair colour and with colouring treatments to deposit new pigments. Even the gentlest treatment can weaken the hair structure.

### WITHOUT MOLECULAR HAIR PROTECTION COMPLEX



From the inner peptide spiral to the fibrous layer and right through to the outer cuticle, the hair consists of keratin, its essential building block. Chemical processes can break open sulphur bonds and destabilise the hair keratin. This can in turn lead to keratin gaps (porosity) and tears (split ends) in the hair, which cause it to lose its healthy shine and elasticity and even break off as the ultimate consequence.

### WITH MOLECULAR HAIR PROTECTION COMPLEX



The concentrated molecular protection complex in *Structure Restoring* system hair care protects and renews the sulphur bonds during and after chemical treatments. New keratin is deposited to fill in gaps in the hair. As a result, the hair is stabilised, and its elasticity is improved.

## COLOUR PROTECTION

# Overview of Structure restoring products

STRUCTURE RESTORING  
CONCENTRATE  
STEP 1



Addition during oxidative colour treatments.

Protects and renews sulphur bonds, stabilises the hair and fills in keratin gaps in the hair structure.

STRUCTURE RESTORING SPRAY  
STEP 2



Special conditioning application in the salon after chemical treatments and as a refreshing and sealing conditioning application for home use.

Regenerates the hair structure from within, protects the sulphur bonds and fills in keratin gaps in the hair structure.

STRUCTURE RESTORING MASK  
STEP 3



Nourishes, restructures and regenerates the hair surface. Protects and seals the external layers of the hair.

# COLOUR PROTECTION

PRODUCTS	ART. NO.	RETAIL PRODUCT SALON PRODUCT
<b>Shine Restoring Pre-Shampoo Treatment</b> Hair care for refreshing colour shine before washing	120526 130664	Bottle, 250 ml Bottle, 1000 ml
<b>Shine Restoring Shampoo</b> Shampoo for refreshing colour brilliance	120415 130305	Bottle, 250 ml Bottle, 1000 ml
<b>Shine Restoring Conditioner</b> Express hair care for refreshing colour shine	120822 130406	Tube, 150 ml Pot, 1000 ml
<b>Shine Restoring Conditioning Fluid</b> Hair care fluid for refreshing colour shine	120549 130657	Tube, 125 ml Tube, 125 ml
<b>Structure Restoring Concentrate</b> Restructuring concentrate	— 130622	— Ampoule, 4 ml
<b>Structure Restoring Treatment</b> A restructuring deep-conditioning treatment Structure Restoring Spray + Structure Restoring Mask	123212	Set (Bottle, 50 ml, Tube 100 ml)
<b>Structure Restoring Spray</b> Intensive restructuring care spray	— 130715	— Bottle, 250 ml
<b>Structure Restoring Mask</b> Restructuring deep-conditioning hair care	120828 130856	Tube, 100 ml Pot, 500 ml



LA BIOSTHETIQUE®  
PARIS

Colour  
Protection

HAIR CARE

Shine Restoring  
Pre-Shampoo  
Treatment

Soin pré-shampooing  
ravivant la couleur

Farbglanz auffrischende Haar-  
pflege vor der Haarwäsche

250ml e 8.4fl.oz.

# SHINE RESTORING PRE-SHAMPOO TREATMENT

The deep-conditioning pre-treatment protects the hair against moisture and colour loss during the washing — for wonderfully soft hair with healthy shine.

Care before cleansing? What may seem like an unusual idea at first is actually a sensible approach. By wrapping itself around the hair like a protective shield, *Pre-Shampoo Treatment* prevents both the loss of colour pigments, moisture and natural oils during shampooing and the deposition of lime from the water, which makes the hair brittle. During application, the innovative liquid formulation with valuable oils and plant extracts transforms into a wonderfully creamy emulsion and develops the full conditioning

power of an intensive treatment without weighing down the hair. Camellia oil and extracts of wheat germ and sea kale supply dry, chemically treated hair with additional moisture and repair surface damage. Yet another advantage is that product residue such as silicone or resin deposits are very gently removed, making the hair softer and livelier. For perfect protection during hair washing followed by brilliant colour shine.

PRODUCT TYPE  
Express deep-conditioning hair care

RETAIL PRODUCT  
Bottle, 250 ml

SALON PRODUCT  
Bottle, 1000 ml

## Ingredients

- *Camellia oil and wheat germ extract*: strengthen the hair, seal its structure, reduce hair breakage and protect coloured hair against external influences and premature colour loss.
- *Extract of sea kale*: protects the hair against UV radiation and heat, deactivates the aggressive free radicals in the hair that are produced by UV radiation, reduces dryness and brittleness and improves combability.
- *Cetrimonium chloride*: has an anti-static effect on the hair.

## Application

Apply 20–40 ml evenly into damp hair before shampooing. Massage in to achieve a creamy texture. Carefully rinse out after 2–3 minutes and continue with your usual shampoo routine. Ideally, the application should be performed in combination with *Shine Restoring Shampoo*.

## Tip

- An amount of approx. 20 ml is recommended for short to chin-length hair and approx. 40 ml for longer hair.
- Additional care after washing the hair is not necessary but can be applied if required.
- *Pre-Shampoo Treatment* can be used several times a week in the case of thick, strong hair or hair with more severe structural damage. For finer or less damaged hair, application in alternation with *Shine Restoring Conditioner* is recommended.
- *Special application*: For thick, very dry hair, *Pre-Shampoo Treatment* can also be used as express deep-conditioning care after shampooing to leave the hair feeling soft and smooth.
- *Pre-Shampoo Treatment* is also suitable for gently removing stubborn deposits from the hair.

## Consultation

- *Pre-Shampoo Treatment supplies your hair with intensive care and moisture even before washing.*
- *It therefore protects the hair against moisture and colour loss during washing.*
- *It is quick and easy to apply and develops a pleasantly creamy texture when massaged in.*
- *Without weighing down your hair, it repairs damage to the hair surface and keeps moisture and colour pigments inside the hair.*
- *After washing, your hair is wonderfully soft, vibrant and full of colour shine.*

The next generation of colour care.

LA BIOSTHETIQUE®  
PARIS

Colour  
Protection

HAIR CARE

Shine Restoring  
Shampoo

Shampooing sublimateur  
d'éclat

Farbbrillanz auffrischendes  
Shampoo

250 ml e 8.4 fl.oz.

# SHINE RESTORING SHAMPOO

The sulphate-free shampoo cleanses the hair particularly gently, protects the hair colour against fading and being washed out and provides long-lasting colour brilliance.

You start to protect your hair colour the moment you wash it. It is important to ensure that the hair is freed from sebum and dirt without washing out any of the colour pigments deposited during colouring. This can only be achieved if the cuticle remains closed and is not roughened up, for example by overactive surfactants. With its sulphate-free, particularly gentle formulation, *Shine Restoring Shampoo* manages the balancing act between cleansing and colour protec-

tion. A copolymer obtained from sugar beets supplies the hair with revitalising moisture and smooths and seals the hair surface. An extract of sea kale provides strengthening protection against UV rays and heat while ensuring that the hair is easy to comb, shiny and soft at the same time. After washing, the colour pigments are firmly fixed in the hair, leaving your coloured hair protected against fading and full of vibrance and natural colour shine.

PRODUCT TYPE  
Shampoo

RETAIL PRODUCT  
Bottle, 250 ml

SALON PRODUCT  
Bottle, 1000 ml

## Ingredients

- *Sulphate-free surfactant mixture*: protects against washing out and provides longer-lasting colour brilliance.
- *Extract of sea kale*: protects coloured hair against UV radiation, neutralises free radicals and improves the softness and combability of the hair.
- *Sugar beet copolymer*: supplies the hair with moisture and smooths and seals the hair surface.

## Application

Evenly distribute onto the hair and scalp, massage in, then rinse out thoroughly.

The highly effective care products in the *Colour Protection* range, for example *Shine Restoring Pre-Shampoo treatment* for before washing or *Shine Restoring Conditioner* for after washing, perfectly complete the care ritual for coloured hair and make the hair soft.

## Consultation

- *The sulphate-free shampoo cleanses your coloured hair particularly gently without attacking the hair colour.*
- *It protects your hair colour against fading and maintains its brilliance.*
- *The highly aggressive free radicals in the hair that are produced by UV radiation are deactivated.*
- *The hair is easier to comb and given silky shine.*

Full colour power.

LA BIOSTHETIQUE®  
PARIS

# Colour Protection

HAIR CARE

## Shine Restoring Conditioner

Conditionneur sublimateur  
d'éclat

Farbglanz auffrischende  
Schnellhaarpflege

150 ml e 5.0 fl.oz.

# SHINE RESTORING CONDITIONER

Without weighing it down, the conditioner detangles and conditions chemically treated hair, seals colour pigments inside the hair, protects the hair against negative environmental influences and gives it softness, colour brilliance and shine.

Do you love your hair colour? *Shine Restoring Conditioner* ensures that this love is here to last. Its high-performance formulation regenerates coloured hair on the inside and protects it against external influences. Camellia and jojoba oil and wheat germ extract use their valuable conditioning substances to smooth and seal the hair surface, seal the colour pigments safely inside the hair and protect the col-

oured hair against premature fading. An extract of sea kale provides additional protection against UV rays and heat, calms brittle hair and makes it easy to comb. Within a matter of minutes and without weighing down the hair, the unbeatable active ingredient combination leaves the hair looking stunning and full of colour brilliance, silkiness and shine.

PRODUCT TYPE  
Express hair care

RETAIL PRODUCT  
Tube, 150 ml

SALON PRODUCT  
Pot, 1000 ml

## Ingredients

- *Camellia oil and wheat germ extract*: strengthen the hair, seal its structure, reduce hair breakage and protect coloured hair against external influences and premature fading.
- *Extract of sea kale*: protects the hair against UV radiation and heat, deactivates the aggressive free radicals in the hair that are produced by UV radiation, reduces dryness and brittleness and improves combability.
- *Jojoba oil*: provides shine and softness.

## Application

After washing, distribute into damp hair and leave in for 2–5 minutes before rinsing out thoroughly. Ideally, the application should be performed in combination with *Shine Restoring Shampoo*.

## Consultation

- *The caring conditioner protects your coloured hair against fading and maintains its colour brilliance for longer.*
- *It optimises the moisture content of the hair and makes it beautifully elastic.*
- *Its active ingredients neutralise the free radicals produced by UV radiation, which are highly aggressive to your hair.*
- *With targeted care, it balances out structural damage to the hair surface and makes your hair noticeably softer and more elastic.*

Brilliant colour protection with silky shine.



# SHINE RESTORING CONDITIONING FLUID

The leave-in fluid with integrated heat protection nourishes and conditions the hair down to the roots. It offers comprehensive protection against negative environmental influences and heat damage, prevents premature colour loss and provides silky shine.

It's hard to believe, but in addition to offering effortless application and having a weightless effect, this creamy light fluid also provides a powerful package of maximum care and protection for coloured hair! Selected active ingredients including vegan silk, camellia oil, extracts of sea kale and wheat germ and wheat peptides provide moisture down to the roots, repair chemically stressed structures and give brittle hair silky elasticity. The hair is nourished deep down

and provided with care exactly where it is needed, and the hair structure is sealed so that the colour pigments remain locked inside the hair, thus protecting the hair colour against premature fading. The instant care also provides effective heat protection that seals the hair and creates a perfect base for subsequent styling — for completely beautiful hair, vibrant colour and silky shine.

PRODUCT TYPE  
Leave-in care cream

RETAIL PRODUCT  
Tube, 125 ml

SALON PRODUCT  
Tube, 125 ml

## Ingredients

- *Vegan silk*: repairs chemically damaged hair structures, protects against structural damage due to heat styling and provides long-lasting colour brilliance, softness and silky shine.
- *Camellia oil and wheat germ extract*: strengthen the hair, seal its structure, reduce hair breakage and protect coloured hair against external influences and premature fading.
- *Extract of sea kale*: protects the hair against UV radiation and heat, deactivates the aggressive free radicals in the hair that are produced by UV radiation and reduces dryness and brittleness.
- *Wheat peptides*: deeply penetrate the hair, form a protective film on the hair surface, restructure the hair and prevent hair breakage.
- *Glucose polyphenol*: supplies the hair with moisture down to the roots, strengthens it and improves its elasticity.
- *Cationic guar*: balances out structural differences and improves combability.

## Application

After washing, distribute into towel-dried hair and lightly knead in. Do not rinse out. Ideally, the application should be performed in combination with *Shine Restoring Shampoo*.

## Consultation

- *The hydrating care fluid strengthens the hair and improves its elasticity.*
- *It seals the hair colour and protects the hair against premature fading.*
- *The practical leave-in fluid offers your hair intensively conditioning heat protection without weighing it down.*
- *It makes the hair easier to comb and style and gives it brilliant shine.*
- *The instant care also provides effective heat protection that seals the hair and creates a perfect base for styling.*

**Intensive care with heat protection.**



# STRUCTURE RESTORING CONCENTRATE

The biomimetic concentrate is proven to protect and renew the hair structure during oxidative colour treatments, has a stabilising effect and prevents hair breakage.

Oxidative treatments such as bleaches or colourations work by changing the hair structure and can weaken it even when carried out as gently as possible. The reason: Sulphur bonds, which act as stabilising cross-links in the hair fibre, break open, keratin molecules that are no longer sufficiently anchored are lost, and the hair loses its stability. Repairing the hair is a complex, time-consuming and sometimes even impossible task. With its revolutionary molecular hair

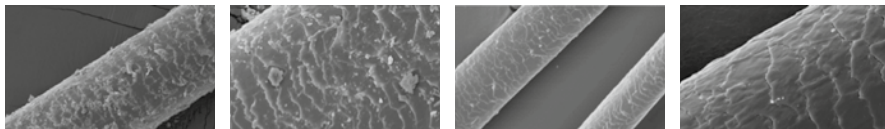
protection complex, *Structure Restoring Concentrate* protects the hair during oxidative colour treatments, increases the hair's sulphur content and encourages new links of sulphur bonds. Keratin, the hair's natural building block, is lastingly stored in gaps in the hair structure. As a result, the hair is proven to become more stable and much softer during the oxidative treatment, and hair breakage is effectively prevented.

PRODUCT TYPE  
Hydrogel concentrate

SALON PRODUCT  
Ampoule, 4 ml

## Scientific proof of effect

### Electron microscope studies



Triple-bleached hair – The fibrous material that is peeling off is clearly recognisable, the cuticle is split to completely loose, and the outer protective casing is severely damaged.

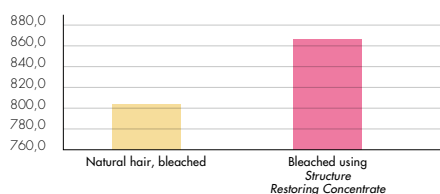
Triple-bleached hair that was protected with *Structure Restoring Concentrate* – Clearly recognisable: the fibrous material remained intact, the cuticle is smooth, and the outer protective casing is very well maintained.

### Chemical studies

The loss of stability of the hair is due to the breaking open of the sulphur bonds and the loss of keratin molecules that are no longer sufficiently anchored in the hair structure. *Structure Restoring Concentrate* is proven to protect and renew the hair's sulphur bonds and refill the hair with keratin at the same time. In doing so, it restores the hair's natural amino acid content.

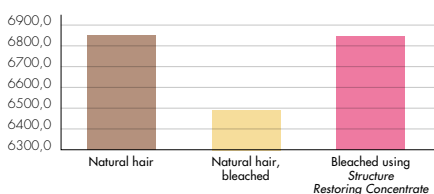
### Sulphur bonds in the hair

Sulphur bonds per gram of hair  
µmol/g



### Amino acids in total

Amino acids per gram of hair  
µmol/g



Following a bleaching application using *Structure Restoring Concentrate*, the hair maintains significantly more of its sulphur bonds than without.

In direct comparison with the natural hair, bleached hair without *Structure Restoring Concentrate* contains significantly less amino acid. This results in destabilisation of the hair. If *Structure Restoring Concentrate* is used, the natural amount of amino acid is maintained.

All of this means that the effect is not just superficial but is scientifically proven to take place inside the hair in particular. This deep effect is why *Structure Restoring Concentrate* creates more stability in the hair and prevents hair breakage.

## Molecular hair protection complex

- *Cross-linked cysteine*: as a long molecule chain, the high-molecular sulphur fills and stabilises the hair, can form sulphur bonds and strengthens the inner hair structure.
- *Natural amino acid cysteine*: traps damaging components of the oxidative treatment, increases the hair's sulphur content and supports the maintenance and new links of sulphur bonds.
- *Keratin*: the natural hair building block is lastingly stored and increases the strength and resistance of the hair.

# STRUCTURE RESTORING CONCENTRATE

## Mechanical studies

Treatment with *Structure Restoring Concentrate* is visibly and noticeably successful in avoiding hair breakage. Mechanical studies of the hair prove that the properties of the hair are improved by treating it with *Structure Restoring Concentrate* during and after oxidative colour treatments. This increased stability results in:

- significantly reduced hair breakage\*
- increased tensile force\*
- improved stretching before breaking\*
- 20% more softness\*

compared to the effects of an oxidative colour treatment without *Structure Restoring Concentrate*.

\* Source: *Analysis of bleached hair*,  
DWI Leibnitz Institute, Aachen, Germany

## Application

Prepare the hair colour or bleach and mix thoroughly. Based on the overall weight of this mixture, add the right amount of *Structure Restoring Concentrate* and mix thoroughly again. Apply as usual, leave in and continue with the treatment.

### Dosage

<i>Mixture of hair colour &amp; bleach</i>	<i>Structure Restoring Concentrate</i>
25–50 g	2 ml (½ ampoule)
51–100 g	4 ml (1 ampoule)
101 g and more	8 ml (2 ampoules)

### Conditioning post-treatment

Spray *Structure Restoring Spray* section by section into damp towel-dried hair and do not rinse out, then evenly distribute *Structure Restoring Mask* into the hair and comb through. Leave in for at least 10 minutes. Rinse out thoroughly with water.

### Dosage

<i>Hair length</i>	<i>Structure Restoring Spray &amp; Mask</i>
Short	4 sprays and 8 g mask
Medium	8–12 sprays and 12 g mask
Long	16 sprays and 15 g mask
Extra-long	24–28 sprays and 25 g mask

In combination with *Structure Restoring Spray* and *Structure Restoring Mask*, the hair structure is given maximum protection and conditioning and it is lastingly maintained.

## Consultation

- *The concentrate protects your sensitive hair structure during the oxidative process.*
- *The professional treatment already rebuilds your hair keratin during the colouration / bleaching process..*
- *It can already repair pre-damages in your hair structure during the application.*
- *This makes the colour treatment gentler.*
- *Your hair is stabilised and protected against hair breakage.*

## Glossary

- *Hair breakage:* A mechanical constant combing experiment on four hair strands, damp, 5.5 hours of combing, 15,000 combing processes, weighing of the broken-off hair.
- *Tensile force, stretching before breaking:* Clamped strands of hair are mechanically stretched until they tear. The more power is required, the more stable and healthier the hair (tensile force), and the further it can be stretched before tearing, the more damaged the hair (stretching before breaking).
- *Softness:* A mechanical experiment on hair strands that are twisted on several rollers. The less force is needed, the softer and less damaged the hair.

A revolutionary structure improver.





# STRUCTURE RESTORING TREATMENT

In two phases, the deep-conditioning hair care repairs and regenerates the internal and external structure of chemically stressed hair, strengthens the hair, prevents hair breakage and protects the hair against negative environmental influences and premature colour loss.

Sometimes the result is greater than the sum of its parts. This is proven by this system care, which features two components that complement each other perfectly and achieve revolutionary results together. The coordinated effect concept restructures chemically treated hair from the inside and outside. The molecular active ingredient complex in *Structure Restoring Spray* with the natural amino acid cysteine reconstructs damaged sulphur bonds in the hair fibre and fills

keratin gaps. The intensively conditioning *Structure Restoring Mask* with camellia and argan oil nourishes and regenerates the hair structure deep down, seals it on the surface and protects the hair against external influences and premature fading of the hair colour. After the two-phase treatment, the hair is strong, healthy and soft, has silky shine and is full of vibrance — as if it has never been subjected to chemical stress.

PRODUCT TYPE  
Two-phase deep-conditioning hair care

RETAIL PRODUCT SET  
Bottle, 50 ml  
Tube, 100 ml

SALON PRODUCT  
Bottle, 250 ml  
Pot, 500 ml

## Ingredients

### Spray — regeneration from within

- *Natural amino acid cysteine*: traps damaging components of chemical treatments, increases the hair's sulphur content and supports the maintenance and new links of sulphur bonds.
- *Keratin*: the natural hair building block is lastingly stored and increases the strength and resistance of the hair.
- *Wheat peptides*: deeply penetrate the hair, form a protective film on the hair surface, restructure the hair and prevent hair breakage.
- *Magnesium mineral salt*: strengthens and stabilises the hair by cross-linking salt bonds.
- *Extract of sea kale*: protects against UV radiation and heat, reduces dryness and brittleness and improves combability.

### Mask — regeneration from the outside

- *Camellia oil and wheat germ extract*: strengthen the hair, seal its structure, reduce hair breakage and protect the hair's chemical and natural colour pigments against external influences and premature fading.
- *Extract of sea kale*: protects against UV radiation and heat, reduces dryness and brittleness and improves combability.
- *Sugar beet copolymer*: smooths the hair and supplies it with moisture.
- *Argan oil*: supplies vitamins and high-quality fatty acids, which make the hair more resistant and flexible and give it stunning shine.
- *Ceramides*: repair damaged areas in the hair shaft.

## Application

Spray *Structure Restoring Spray* section by section into damp towel-dried hair and do not rinse out, then evenly distribute *Structure Restoring Mask* into the hair and comb through. Leave in for at least 10 minutes. Rinse out thoroughly with water.

### Dosage

#### Hair length

Short	4 sprays and 8 g mask
Medium	8–12 sprays and 12 g mask
Long	16 sprays and 15 g mask
Extra-long	24–28 sprays and 25 g mask

## Consultation

- *As a salon application, the system care continues the effect of Structure Restoring Concentrate and when used regularly at home, it lastingly ensures the result of the salon treatment.*
- *The treatment protects the sulphur bonds of your hair structure and refills the keratin gaps.*
- *It repairs and regenerates both the inner and outer structure of your hair.*
- *It significantly and lastingly improves the elasticity of your hair and protects against hair breakage.*
- *It seals the hair with the "lotus effect", protects it against external influences and premature fading and maintains the colour brilliance for longer.*

The power programme for stressed hair.



# STRUCTURE RESTORING MASK

The deep-conditioning mask with a multiple effect deeply regenerates and restructures the hair structure, seals and protects its external layers and maintains the hair's colour brilliance.

When colouring the hair, the hair cuticle needs to open so that the colour pigments can permanently deposit themselves in the hair. If the cuticle is not closed immediately after treatment, the beautiful new colour fades far too quickly, and the hair becomes brittle, dull and prone to damage. With a strong team of protective and conditioning substances, *Structure Restoring Mask* provides a remedy that works deep down. Extracts of wheat germ and sea kale, camellia

and argan oil, a copolymer obtained from sugar beet and ceramides all nourish chemically treated hair and regenerate stressed structures. Strengthened from the inside, the hair is given new resistance and flexibility. The hair surface is smoothed, and the cuticle is sealed. The hair is protected from the roots to the tips, shielded against negative environmental influences and made wonderfully soft and full of expression and silky shine.

PRODUCT TYPE  
Deep-conditioning hair care

RETAIL PRODUCT  
Tube, 100 ml

SALON PRODUCT  
Pot, 500 ml

## Ingredients

- *Camellia oil and wheat germ extract*: strengthen the hair, seal its structure, reduce hair breakage and protect the hair's chemical and natural colour pigments against external influences and premature fading.
- *Extract of sea kale*: protects against UV radiation and heat, reduces dryness and brittleness and improves combability.
- *Sugar beet copolymer*: smooths the hair and supplies it with moisture.
- *Argan oil*: supplies vitamins and high-quality fatty acids, which make the hair more resistant and flexible, and gives the hair stunning shine.
- *Ceramides*: repair damaged areas in the hair shaft.

## Application

Distribute into damp hair, leave in for 10 minutes and rinse out thoroughly.

Ideally use after *Structure Restoring Spray*.

## Consultation

- *The deep-conditioning mask nourishes, restructures and regenerates the structure of your hair deep down and prevents hair breakage.*
- *It seals the hair structure with the "lotus effect" and protects your hair against external influences.*
- *The elasticity and softness of your hair are significantly and lastingly improved, and your hair is given silky shine.*
- *Your hair is protected against fading and maintains its colour brilliance for longer.*

The ultimate powerful care.